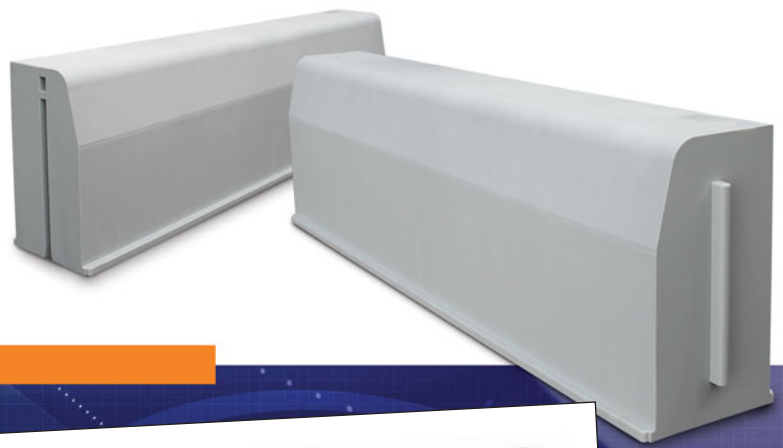


Durakerb



SHE Design Bulletin

amec

Designing to facilitate the provision of fall protection during construction

D04 - RECYCLED PLASTIC KERBS

Currently in use on a number of AMEC Projects

- Made from waste plastic bottles, bags, packaging and industrial products (closed loop principle)
- Help meet government targets for sustainable construction
- Lightweight and complies with the manual handling guidelines.
- Each kerb weighs under 5Kg. Standard concrete kerbs weigh around 70 Kg
- Helps meet AMEC's Sustainability Targets & Objectives by reducing waste to landfill

Other products include:

- Damp-Proof Membranes
- Water Drainage
- Pipes and Ducting
- Wall Cladding, Soffits and Fascias
- Roofing Materials
- Traffic Management
- Piling and Ground Stabilisation
- Scaffold Planks
- Decking and Flooring Products
- Fencing
- Street Furniture

For further details and references related to this bulletin refer to 'SHE Design Bulletins – Further Guidance at:

www.durakerb.com
www.wrap.org.uk/materials/plastics/construction/products/index.html
http://businesses.amecnet.com/ind_pha/she/Publications/Bulletins/Bulletins/index.asp

Remember : eliminate – reduce - inform

Nothing is so important that we cannot take time to do it safely
LIFE – Can you afford to live without it?
For further information and advice, please contact your site SHE Adviser.

For further information and advice, please contact the Process Support Team on 01925 281900

Display on Notice Board and use as a brief to operatives, where appropriate



Ref: AGL/ADPS/SAF/004-D04 14/07